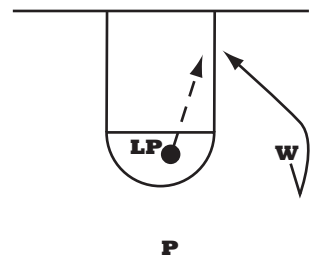
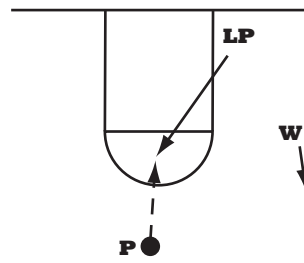
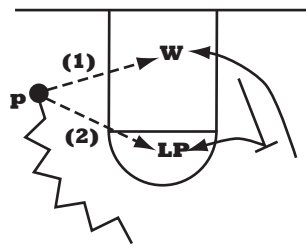
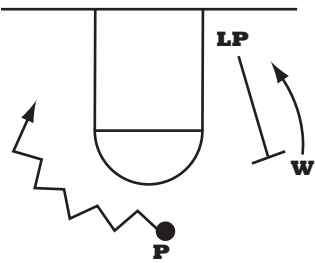
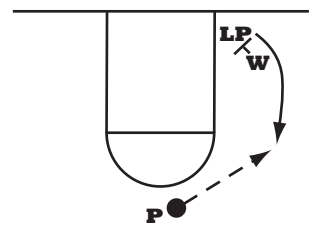
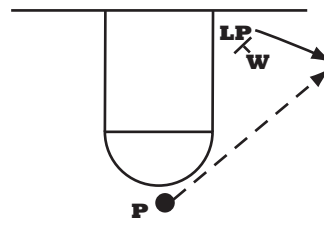
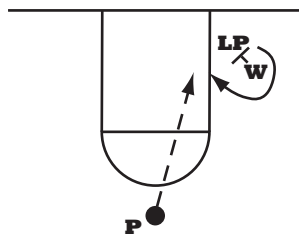
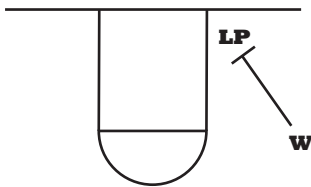


**Basic Set B**



**Back Screen with dribble (1)pass to cutter  
(2)pass to screener**

**Low Post flashes to high post, wing back door cut**



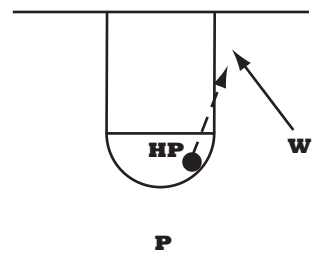
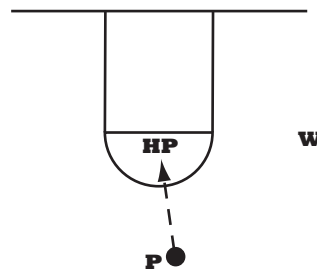
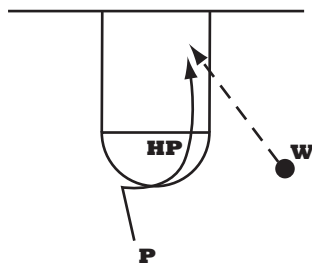
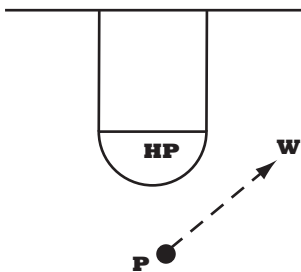
**Down Screen with.....**

**'curl'**

**"pop out"**

**"flare"**

**Basic Set C**

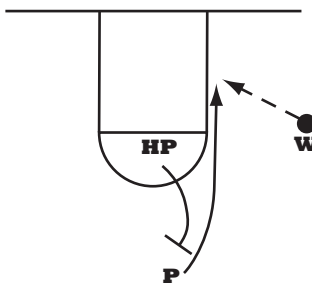
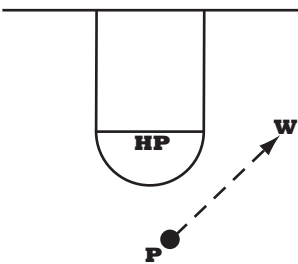


**UCLA CUT - pass to wing**

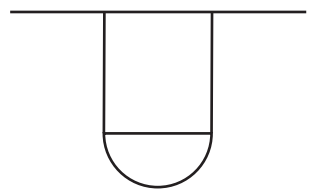
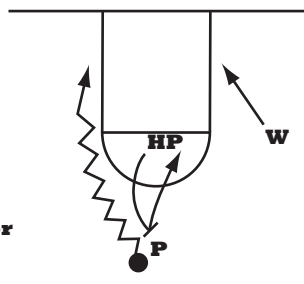
**Point cuts  
Wing looks for cutter**

**Pass to high post**

**Back door cut by wing**



or



**Pass to wing**

**High post set screen  
for point.  
Point cuts for pass  
from wing**

**High post back screens  
for point, dribble drive,  
high post rolls**